

Text and Pictures Updated 16/01/18



PORTAL FOREST ESTATES

**A UNIQUELY AFRICAN
ECO-RESORT AND
EXPERIENTIAL
LEARNING CENTRE**

A **REDD+** Project In Collaboration With  (Forestry Commission Ghana)
Forest Landscape Restoration Model



PORTAL FOREST ESTATES

A UNIQUELY FULFILLING AFRICAN ECO-EXPERIENCE



Beginning in 2000, Portal has transformed degraded forest land into a model REDD+ pilot in collaboration with the Forestry Commission of Ghana.

The vision for the Forest is to further develop it as an experiential learning center where community members, research institutions, graduate students and the public at large can enjoy forest experiences tailored to their expectations and unique needs

For example- Community members can sign-up to the Portal out-grower-scheme to grow a mix of essential oil crops in a forest landscape restoration approach which has enormous wealth creation potential capable of transforming incomes from an average of US\$ 500 per hectare per year for Cocoa going up to US\$ 2800 for rubber to US\$ 4500 per hectare per year following the Portal FLR model.



ABOUT THE PORTAL FOREST ESTATES



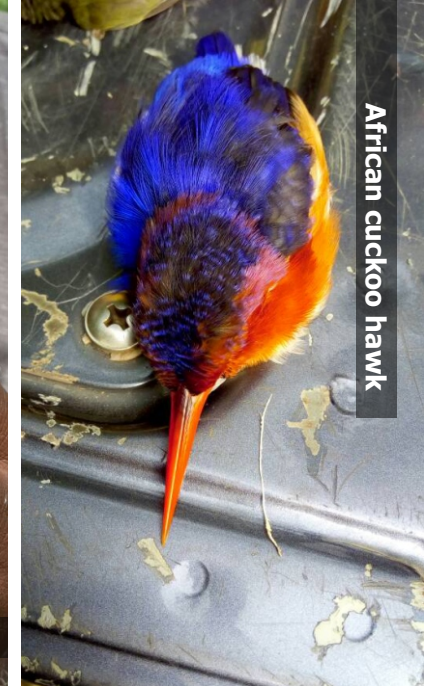
PORTAL FOREST ESTATES

A UNIQUELY FULFILLING AFRICAN
ECO-EXPERIENCE

For Students and Academia, portal provides a space for practical implementation and demonstration of theories learnt in the classroom and a field laboratory for practical research.



Pigmy Kingfisher



African cuckoo hawk



Common bulbul



African Gold Hawk



Crested Hornbill





PORTAL FOREST ESTATES

A UNIQUELY FULFILLING AFRICAN ECO-EXPERIENCE

For the public, Portal has a wide package of tours from Yoga and Taichi retreat, plant identification and interpretation tours, bird watching, fishing, wildlife observation, location for films, nature photography, herbs, species and essential oil tours to name but a few

As part of this vision Eco-Resorts a Film Studio as well as an on-site expanded Distillery, Laboratory Workshops, Green Design and Construction, and Learning Center are in the process of being rolled-out.





PORTAL FOREST ESTATES

A UNIQUELY FULFILLING AFRICAN ECO-EXPERIENCE

Through our on-going efforts to maintain a holistic approach to forest landscape restoration, visitors to our forest are able to experience multiple forest landscapes consisting of restored natural forest, Agro-forestry, herbs, spices, essential oil landscape as well as fast growing Cederella plantation, bamboo groves and forest streams to name but a few.

This rich diversity provides a habitat for several species of forest animals such as Bush Backs, Royal Antelope, Daika, Dwarf Crocodile, African python, Monitor Lizard, countless species of birds and butterflies including three (3) different species of monkey to name but a few.

Within the 210 acre forest model is 100-acres of restored indigenous forest in which over 30 of the most endangered tree species have been replanted to serve as a source of Mother Tree Conservation and serve as a source of seedlings for replicating the model at other locations.

Eco-trails for practically experiencing the wonder and majesty of endangered almost extinct trees such as Odum,(Iroko) Hydua, Asanfina, Makore, Niangon, Edinam, Walnut, Emire and Wawa to name but a few.



PORTAL PLANTATION IN NUTSHELL

Managing of the Forest for multiple uses within its bounds of its ecological limits

Sustainable forestry model which focuses on building and maintaining long Forest Assets term assets for the use of generations yet unborn

Portal conserves, protects and manages the Forest Ecosystem so as to balance competing land uses whilst deriving goods and services that meet human needs and requirements

Portal works with the often complex chaotic natural systems of the forest rather than simplifying into a mechanical Mono-Crop Plantation Model

Since 2000, Portal has planted over 30,000 Cederella and Indigenous trees

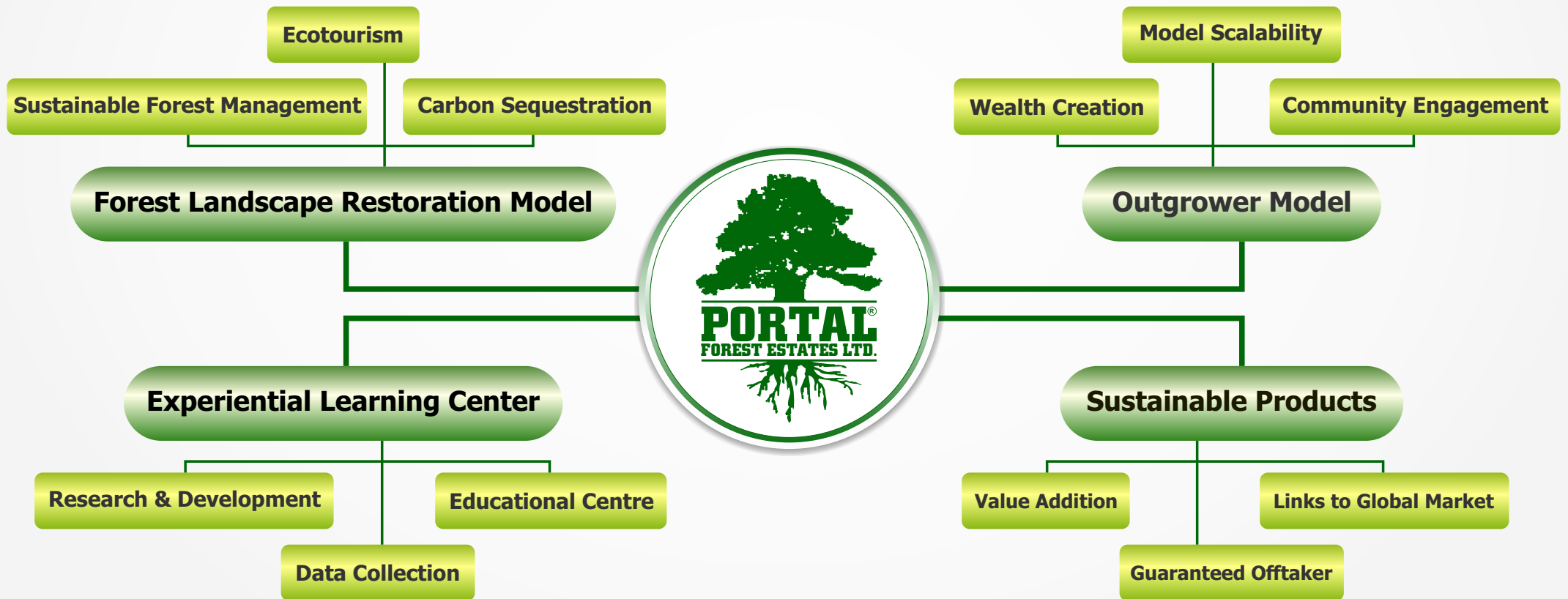
4000 Black pepper vines

4000 Ylang Ylang trees

9 Acres of Heliconia and horticultural products as part of its Gender Empowerment Initiatives



PORTAL FOREST ESTATES MODEL





PORTAL MODEL

OF SUSTAINABLE FORESTRY MANAGEMENT

Human Resources Training & Development

Purchasing of Land & Forest Assets

R&D:

Forest Assets Economic Research and Forecasting, Jurisprudence, Marketing, Silviculture

Finance/Portfolio Management:

Investor Relations, Accounting, Client Reporting, Cash Management, Raising Capital, Existing Forest Investment Analyses, Disposition/Acquisition Strategy and Analysis, Investment Vehicle/Criterion

Investing in Properties

- > Generating investment ideas
- > Filtering Investment Ideas
- ~ Return
- ~ Risk
- ~ Geography
- ~ Forest type Nature
- > **Due Diligence**
- ~ Quantitative Analyses/ Modeling
- ~ Verifying Data
- ~ Negotiations
- ~ Closing Deals

Forest Property Management

- > Resource Registrations
- > Maintaining Geographical Information Systems (GIS)
- > Resource Analyses (Timber, Sand/Gravel, Water, Minerals, Hydro Power, Fossil Fuel, Hunting, Fishing Tourism, Development, Biodiversity.)
- > Long-term management planning
- > Acquisition and disposition support
- > Short-term Investment Planning
- > Environmental Ethics/ Decisions about Non-commercial Investments (environmental/social)
- > Identifying HBU-areas

Forest Property Operations

- > Silviculture
- > Roads
- > Thinning/Harvesting
- > Other Commercial and Non-commercial Activities

Marketing and Sale of HBU-areas

- > Market analyses
- > Marketing Planning
- > Negotiating/Selling (conservation) easements and properties for development, extraction and conservation.

Marketing, Sales and Distribution of Forest Products

- > Market Analyses
- > Marketing Planning
- > Negotiating/Selling Forest Products
- > Distribution/Logistics

Service

Margin



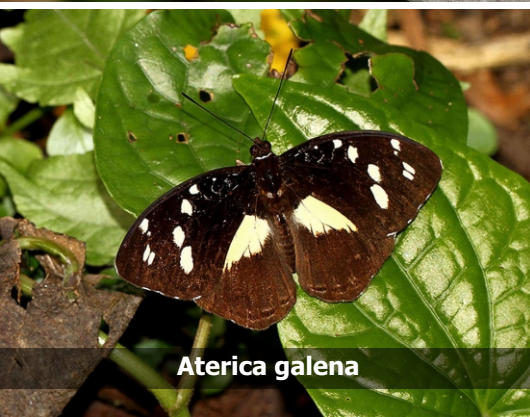
Papilio dardanus



Papilio demodocus



Swallowtail Butterfly



Aterica galena



BUTTERFLIES



Danaus chrysippus



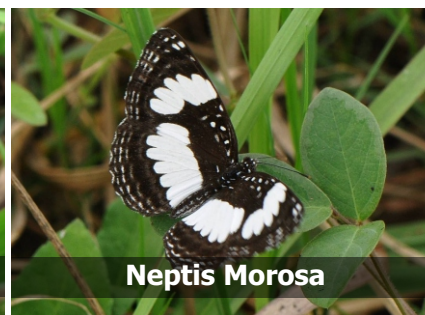
Leptosia medusa



Eurema Hecabe



Junonia Oenone



Neptis Morosa



Nepheronia thalassina



Junonia Terea



Euphaedra Medon



Cymothoe Mabiliei



African Monarch



Amauris Niavius



Melanitis Leda



Hypolimnias Salmacis





African Cuckoo Hawk



BIRD SPECIES



African-pied Hornbill



African Green Pigeon



African Palm Swift



African Pygmy Kingfisher



African Goshawk



African Harrier Hawk



Black-Throated Coucal



Black & White Mannikin



Blue Spotted Wooddove



Black-winged Oriole



Brown Illadopsis



Buff Throated Sunbird



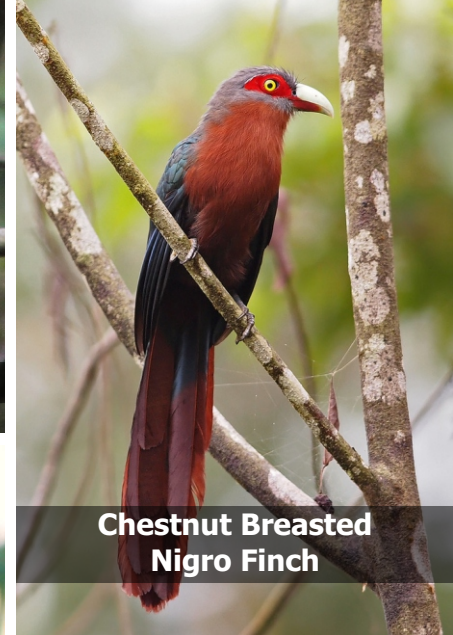
Buff-spotted Woodpecker



Cameroon Sombre Greenbul



Chestnut Wattle Eye



**Chestnut Breasted
Nigro Finch**



Grey Longbill



Finch's Flycatcher Trush



Collared's Sunbird



Common Bulbul



Grey Headed Bristlebill



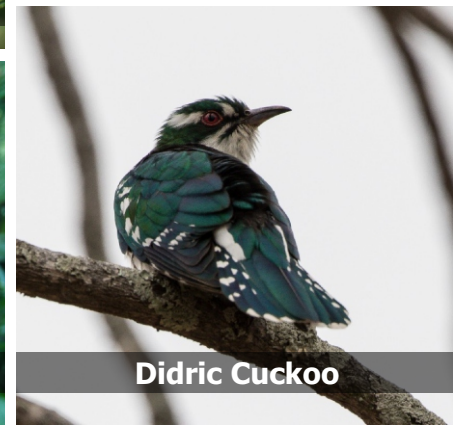
Green Turaco



Green Crombec



Green Hylia



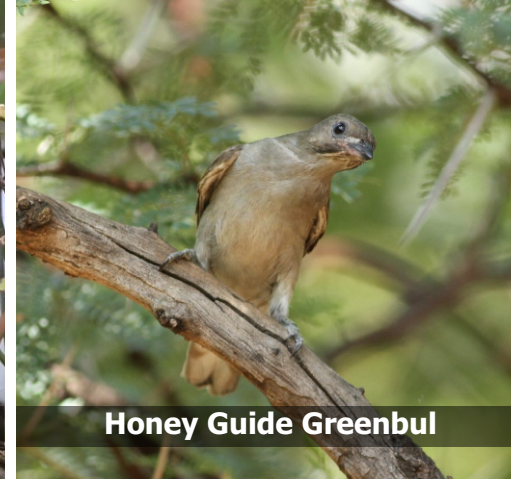
Didric Cuckoo



Grey-headed Nigro Finch



Hairy-breasted Barbet



Honey Guide Greenbul



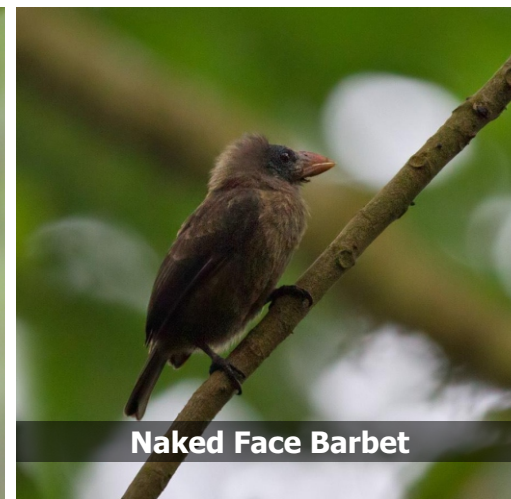
Icterine Greenbul



Klaas Cuckoo



Long Tail Hawk



Naked Face Barbet



Northern Puffback



Little Greenbul



Olive Green Cameroptera



Olive Sunbird



Red-bellied Paradise Flycatcher



Senegal Coucal



Simple Leaflove



Red-eye Dove



Red Headed Malinbe



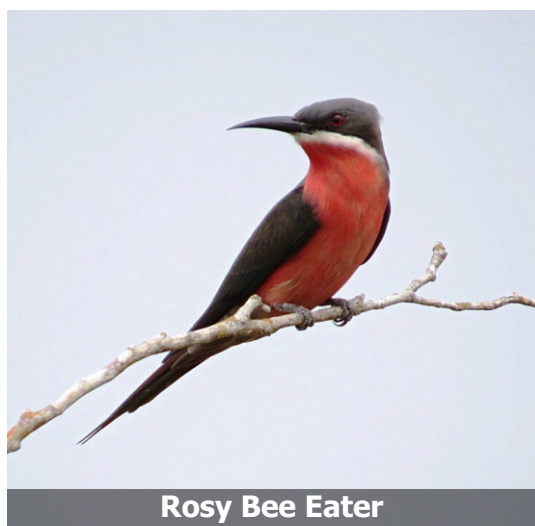
Speckled Thinkerbird



Splendid Glossy Starling



Red Rumped Thinkerbird



Rosy Bee Eater



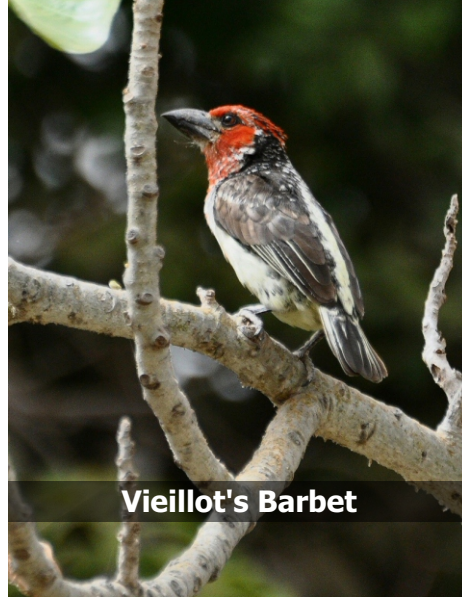
Swamp Palm Bulbul



Puvels Illadopsis



Tambovine Dove



Vieillot's Barbet



Vieillot's Black Weaver



Western Bearded Greenbul



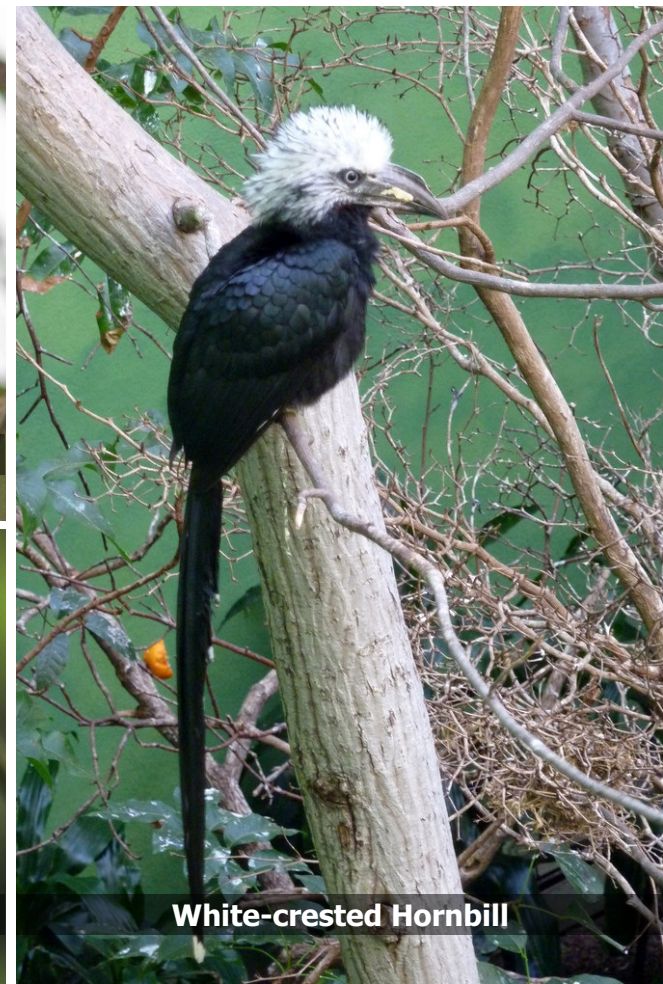
Velvet Mantle Drongo



Western Nicator



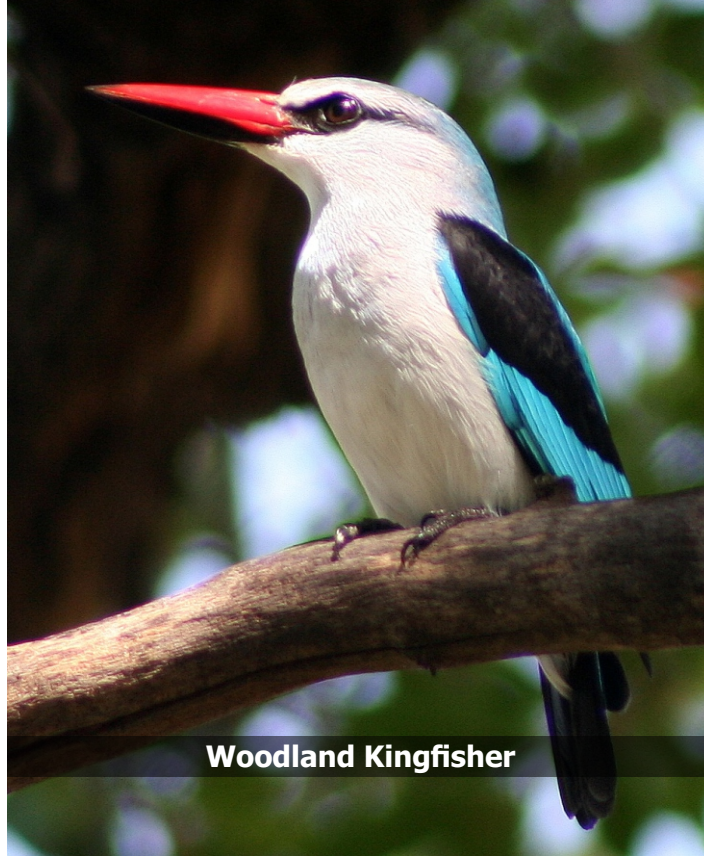
White-bellied Kingfisher



White-crested Hornbill



White-throated Bee-eater



Woodland Kingfisher



Yellowbill



Willcock's Honey Guide



Yellow-browed Cameroptera



Yellow-whiskered Greenbul



LIZARDS



White-lipped Mabuya



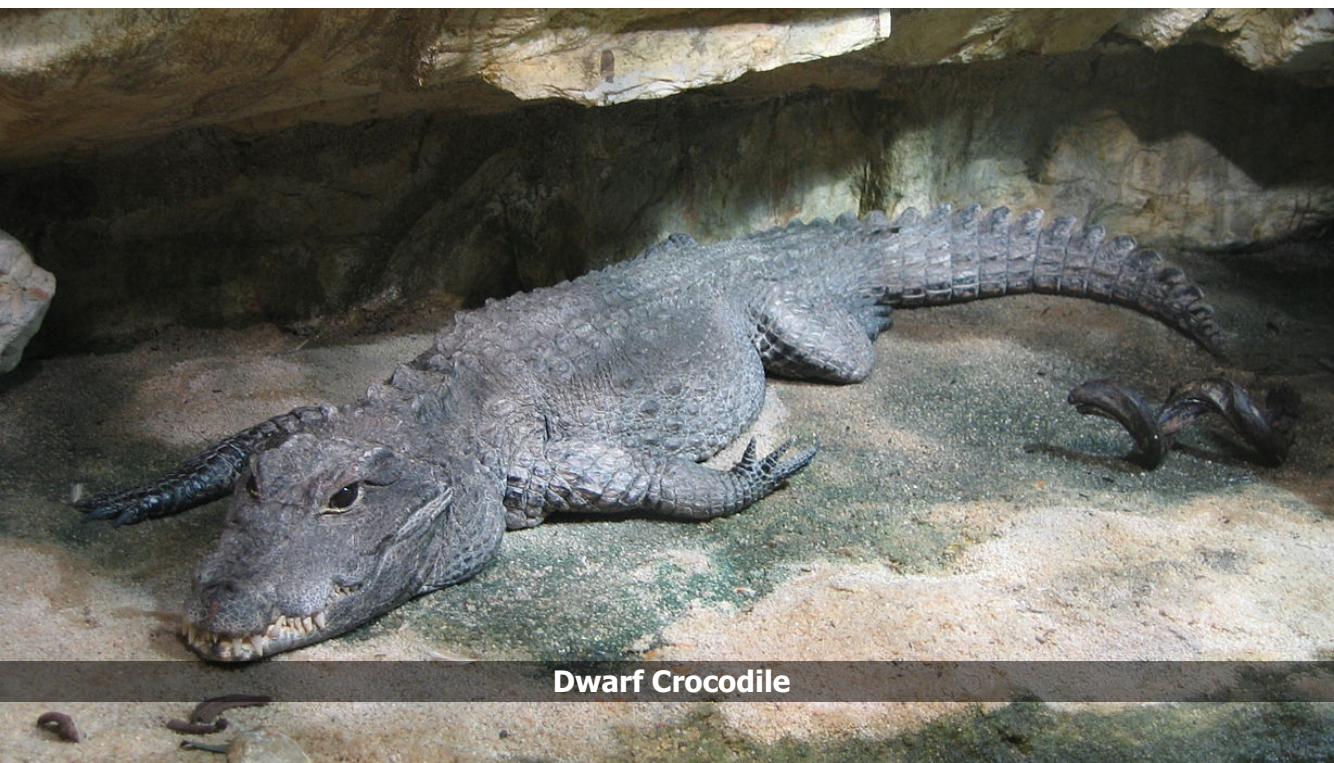
Senegal Mabuya



Nile Monitor/Monitor Lizard



House Gecko



Dwarf Crocodile



Lidless Skink



SNAKES



Green tree snake



Sand snake



Western Green mamba



African python



Gaboon viper



Forest cobra



Boomslang



African Civet



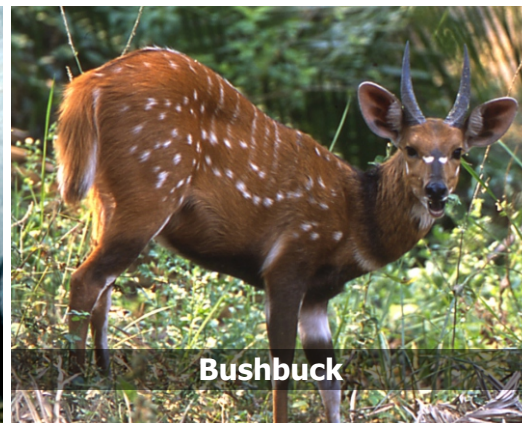
LARGE MAMMALS



Bay Duiker



Bossman's Potto



Bushbuck



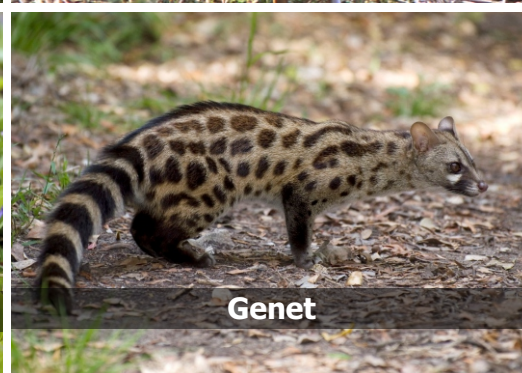
Demidoff's Galago



Gambian Sun Squirrel



Hedgehog



Genet



Black Duiker



Marsh Mongoose



Maxwell Duiker



Giant Forest Squirrel



Mona Monkey



Tree Hyrax



Slender Mongoose



Palm Squirrel



Striped Ground Squirrel



Royal Antelope



Pel's Anomalure



Pangolin



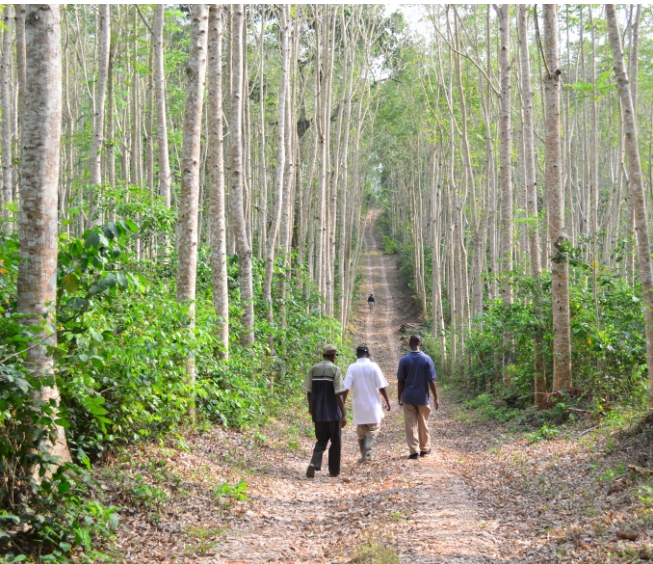
Fire-footed Squirrel



Palm Civet



Red River Hog







AMPHIBIA





A flat fee of is \$ 80 per Adults exclusive VAT but includes Meals and Non-acholic Beverages.



DAY RATES



CONTACT PORTAL FOREST ESTATES

P. O. BOX 7882 ACCRA NORTH, GHANA
TELEPHONE +233 244 361213
sefa@songhaiafrica.com | wbaiden@mac.com
www.portal.com.gh

GETTING THERE

The Forest Estates is comfortably accessible by road directly from the Cape Coast Road with a driving time of approximately 2 hours and 30 minutes.



CONTACT PORTAL FOREST ESTATES



TERMS AND CONDITIONS

- Rack Day Tour Rate is 80 Dollars per Adults exclusive VAT
- Rates are subject to change without notice.

PAYMENT POLICY

- A deposit of 50% of the total booking is required to confirm the reservations.
- All transfers of fund are to be made nett of any charges

CHILDREN POLICY

- Children who have not yet turned 3 by the date of arrival stay free of charge
- Children from the age of 3 up to their 6th birthday will be charged 25%
- Children from the age of 6 up to their 12th birthday will be charged 50%
- Vehicle exclusivity must be pre-booked.